

Seaweed Prevents Breast Cancer?

Hiroomi Funahashi,^{1,4} Tsuneo Imai,¹ Takahiro Mase,¹ Masanori Sekiya,¹ Kazuki Yokoi,¹ Hiromichi Hayashi,¹ Arihiro Shibata,¹ Takako Hayashi,¹ Mikiko Nishikawa,¹ Namiko Suda,¹ Yatsuka Hibi,¹ Yutaka Mizuno,¹ Kyosuke Tsukamura,¹ Akemi Hayakawa² and Seiichi Tanuma³

¹Department of Surgery II and ²Equipment Center for Research and Education, Nagoya University School of Medicine, 65 Tsurumai-cho, Showa-ku, Nagoya 466-8550 and ³Department of Biochemistry, Faculty of Pharmaceutical Sciences, Science University of Tokyo, 12 Ichigaya Funagawara-machi, Shinjuku-ku, Tokyo 162-0826

To investigate the chemopreventive effects of seaweed on breast cancer, we have been studying the relationship between iodine and breast cancer. We found earlier that the seaweed, *wakame*, showed a suppressive effect on the proliferation of DMBA (dimethylbenz(a)anthracene)-induced rat mammary tumors, possibly via apoptosis induction. In the present study, powdered *mekabu* was placed in distilled water, and left to stand for 24 h at 4°C. The filtered supernatant was used as *mekabu* solution. It showed an extremely strong suppressive effect on rat mammary carcinogenesis when used in daily drinking water, without toxicity. *In vitro*, *mekabu* solution strongly induced apoptosis in 3 kinds of human breast cancer cells. These effects were stronger than those of a chemotherapeutic agent widely used to treat human breast cancer. Furthermore, no apoptosis induction was observed in normal human mammary cells. In Japan, *mekabu* is widely consumed as a safe, inexpensive food. Our results suggest that *mekabu* has potential for chemoprevention of human breast cancer.

Key words: Breast cancer — Chemoprevention — *Mekabu* (seaweed) — Apoptosis

Chemoprevention of breast cancer has received much attention in Europe and the U.S. because of the high incidence of this cancer (1 in 4–8 persons) and the strong hereditary component.^{1–4} Tamoxifen is accepted as a chemopreventive agent following the results of the National Surgical Adjuvant Breast and Bowel Project (NSABP) P-1 study.⁵ However, despite the increasing incidence of breast cancer in Japan, the use of chemopreventive agents is so far forbidden. We have been studying the relationship between iodine and breast cancer for 10 years, trying to determine whether iodine is useful for chemoprevention of breast cancer.^{6–8} There have been several reports on the relationship of iodine and breast cancer,^{9–11} but the present paper is the first concerning breast cancer chemoprevention by seaweed.

We first examined diluted Lugol's solution, an inorganic iodine solution that has been employed as a clinical test reagent for humans. Inorganic iodine suppressed the proliferation of DMBA (dimethylbenz(a)anthracene)-induced rat mammary tumors, and orally administered iodine eventually reached the tumor tissues.⁷ On the basis of these results, we examined the effect of seaweed, a natural food containing iodine.⁸ In the same report, we presented the

results of our experiments using the seaweed *wakame*, which was given to rats mixed into usual rat feed at 1 and 5% by weight. *Wakame* showed a strong suppressive effect on the proliferation of DMBA-induced rat mammary tumors even in the 1% *wakame* group, and apoptosis induction was thought to be a possible mechanism of this effect. However, this dose, if scaled up to the human body weight, is too large to be practicable.⁸

In the present experiments, *mekabu* was used instead of *wakame*. It contained almost the same amount of iodine as the *wakame* used in our former experiments (5.9 vs. 5.7 mg/100 g), but is cheaper and easier to process than *wakame*. In the *in vivo* experiments, a single dose of 20 mg/body of DMBA (Wako Junyaku Kogyo, Tokyo), a rat mammary carcinogen, was dissolved in sesame oil and given by gastric intubation to two randomly divided groups of eight-week-old female SD (Sprague-Dawley) rats (Japan SLC, Inc., Shizuoka) weighing 180 to 200 g ($n=12$ for each group). All rats were fed with CE-2 (CLEA Japan, Inc., Tokyo). Beginning 1 week after DMBA administration, the 2 groups were given tap water and *mekabu* solution. *Mekabu* solution was prepared as follows using powdered *mekabu* (Riken Vitamin, Inc., Tokyo), which contains 5.9 mg/100 g of iodine, 889 mg/100 g of calcium, 3.16 g/100 g of potassium and 1.65 g/100 g of NaCl. Powdered *mekabu* 1.5 g was mixed with 1000 ml of distilled water and stirred. After 24 h at 4°C,

⁴To whom correspondence and requests for reprints should be addressed.

E-mail: hfunahas@tsuru.med.nagoya-u.ac.jp

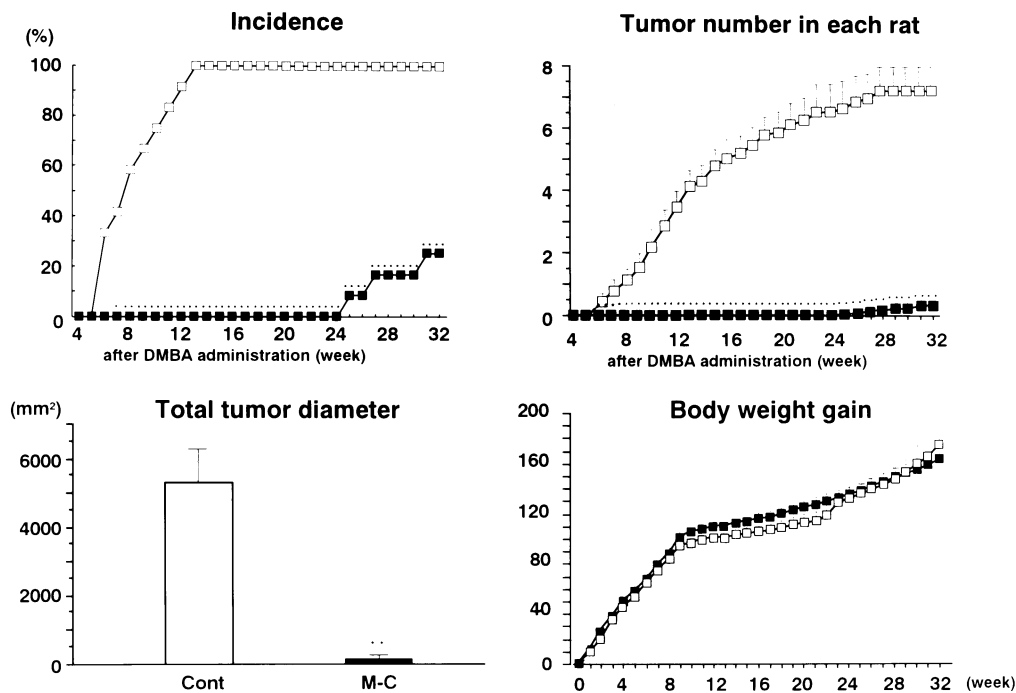


Fig. 1. Significant differences were noticed in the incidence of mammary tumors between the control and *mekabu* group each week. There were significant differences between the 2 groups in the number of tumors per rat, as well as a significant difference between the 2 groups in total tumor diameter at 32 weeks. Throughout the 32 experimental weeks, all rats in both groups showed the same weight gain in a subchronic toxicity test. ** $P < 0.01$ vs. control group. □ control, ■ *mekabu* group.

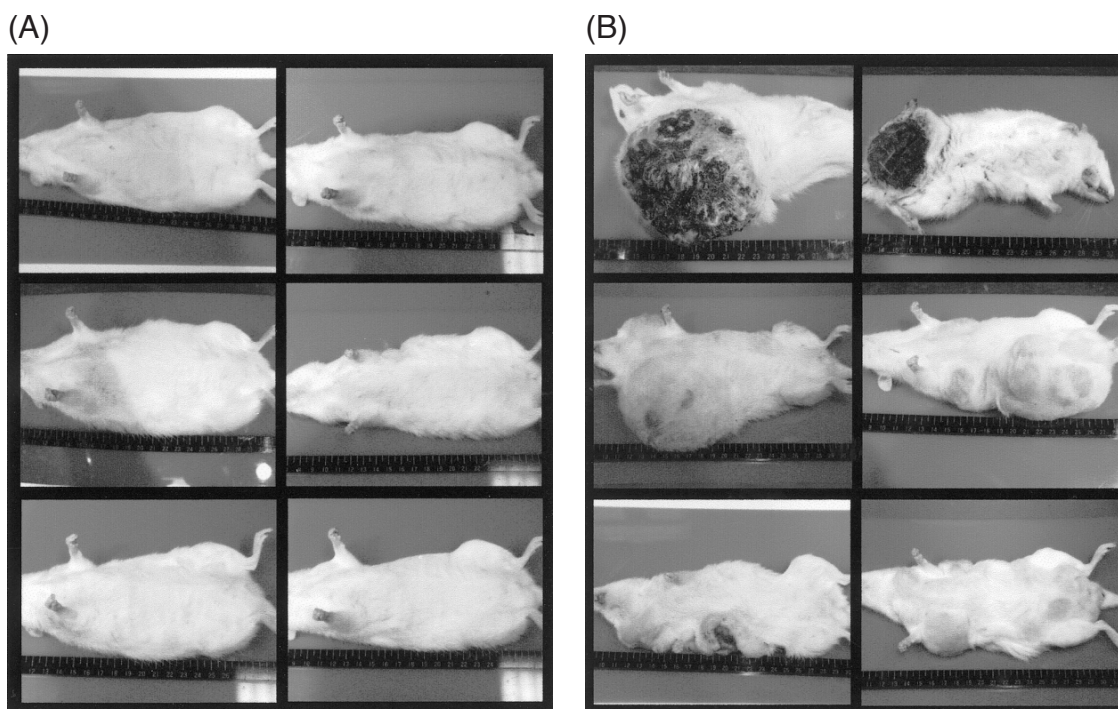


Fig. 2. Mammary tumors were not observed macroscopically in rats of the *mekabu* group (A) despite huge tumors in the control group (B).

the mixture was filtered through 3 kinds of nylon mesh (7.0, 4.5 and 0.45 μm), and the filtrate was used as *mekabu* solution. Weekly changes in rat body weight, incidence and the number of mammary tumors in each rat were then observed for 32 weeks. The entire mammary tumors of each rat were removed, and the total tumor diameter was measured at the end of the 32-week experiment. The incidence of mammary tumors in rats of the group given *mekabu* was extremely low (Figs. 1, 2). Throughout the experiment, the number of tumors in the *mekabu* group was significantly lower than in the control group. (Figs. 1, 2). The total tumor diameter in the *mekabu* group was significantly smaller than in the control group. Histologically, the mammary tumors were cystic adenocarcinoma, and tumors in the *mekabu* group showed a decreased density of epithelial cells and fibrosis. In a separate subchronic toxicity test experiment, 24 normal 8-week-old female SD rats were randomly assigned to two groups given the same 2 kinds of drinking water without DMBA administration. They were then monitored for 32 weeks by measuring weekly body weight changes. No significant difference in weekly body weight changes was seen between the 2 groups (Fig. 1).

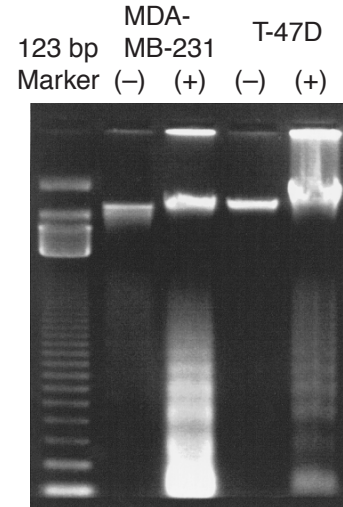


Fig. 3. DNA ladder formation was seen in 2 human breast cancer cell lines after 96-h culture with (+) *mekabu* solution. (-), without *mekabu*.

In the *in vitro* experiments, 0.5, 1.0 or 2.0 g of powdered *mekabu* was dissolved in 150 ml of distilled water, and *mekabu* solution was prepared by the same filtration procedure mentioned above. One ml of *mekabu* solution

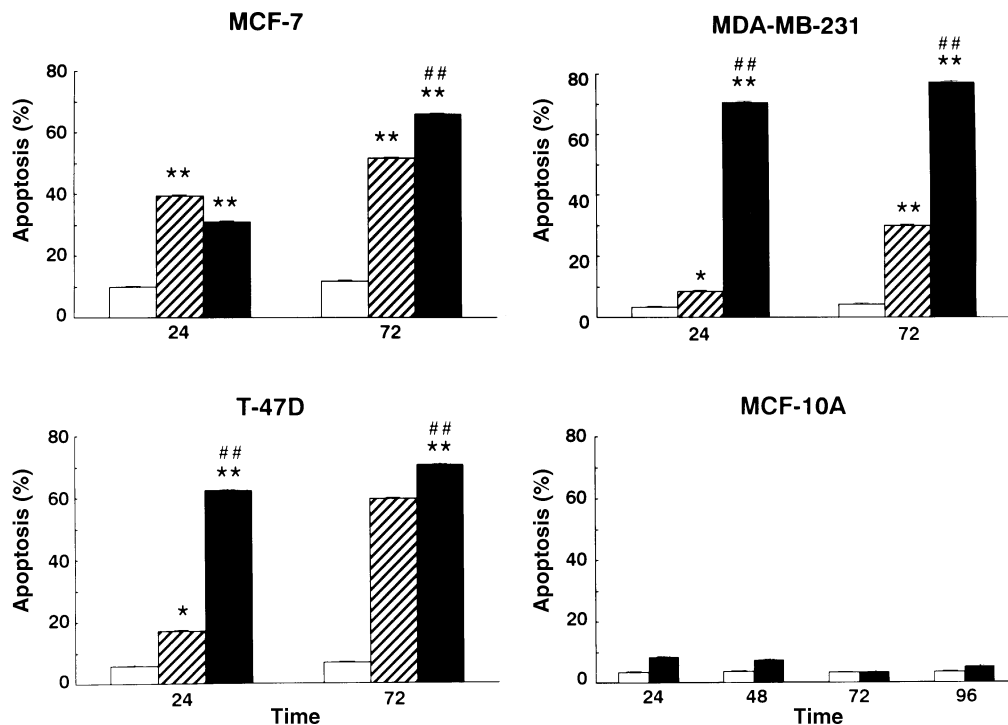


Fig. 4. *Mekabu* (■) showed significantly higher apoptosis induction compared with both the control (□) and 5FU (▨) after 72-h culture in 3 kinds of human breast cancer cell line. At 24-h culture, *mekabu* showed significantly higher apoptosis induction than the control and 5FU except in MCF-10A cells. Human normal mammary cells (MCF-10A) showed no differences in apoptosis induction between the control and *mekabu*. ** $P < 0.01$ vs. control, ## $P < 0.01$ vs. 5FU.

was added to culture medium containing 5×10^6 T-47D cells. The 1.0 g *mekabu* group showed higher apoptosis induction ability than the 0.5 g *mekabu* group and almost the same ability as the 2.0 g *mekabu* group. Therefore, 1.0 g *mekabu* solution was used in the following experiments. MCF-7, T-47D, and MDA-MB-231 human breast cancer cell lines and normal human mammary cells (MCF-10A),^{12,13)} were used. Apoptosis induction ability was measured by conventional flow cytometry.¹⁴⁾ DNA fragmentation was analyzed by conventional gel electrophoresis with agarose gel using an Apoptosis Ladder Detection Kit (Wako Pure Chemical Ind., Ltd., Osaka).¹⁵⁾ *Mekabu* showed strong apoptosis induction in all 3 breast cancer cell lines, and clear DNA fragmentation was seen in T-47D and MDA-MB-231 cell lines (Fig. 3). Next, we compared apoptosis induction by *mekabu* and by 15 μM 5FU (5-fluorouracil), a chemotherapeutic agent frequently used in human breast cancer clinics. Raymond *et al.* reported that the IC_{50} value of 5FU in MCF-7 breast cancer cell line was $23 \pm 3.2 \mu\text{M}$.¹⁶⁾ *Mekabu* showed stronger apoptosis induction than that of 5FU in all 3 human breast cancer cell lines (MCF-7, T-47D and MDA-MB-231). However, normal human mammary cells showed no apoptosis induction (Fig. 4).

REFERENCES

- Costa, A. Breast cancer chemoprevention. *Eur. J. Cancer*, **29A**, 589–592 (1993).
- Alberg, A. J., Visvanathan, K. and Helzlsouer, K. J. Epidemiology, prevention, and early detection of breast cancer. *Curr. Opin. Oncol.*, **10**, 492–497 (1998).
- Lynch, H. T., Lynch, J., Conway, T., Watson, P., Feunteun, J., Lenoir, G., Narod, S. and Fitzgibbons, R., Jr. Hereditary breast cancer and family cancer syndromes. *World J. Surg.*, **18**, 21–31 (1994).
- Garber, J. A 40-year-old woman with a strong family history of breast cancer. *JAMA*, **282**, 1953–1960 (1999).
- Fisher, B., Costantino, J. P., Wickerham, L., Redmond, C. K., Kavanah, M., Cronin, W. M., Vogel, V., Rabidoux, A., Dimitrov, N., Atkins, J., Wieand, S., Tan-Chiu, E., Ford, L., Wolmark, N. and other National Surgical Adjuvant Breast and Bowel Project Investigators. Tamoxifen for prevention of breast cancer: Report of the National Surgical Adjuvant Breast and Bowel Project P-1 study. *J. Natl. Cancer Inst.*, **90**, 1371–1388 (1998).
- Ando, K., Funahashi, H., Kato, N. and Takagi, H. Effectiveness of iodine in suppressing tumor cell proliferation in cultured MCF-7 human breast cancer cells. *J. Jpn. Soc. Cancer Ther.*, **30**, 628–635 (1995).
- Funahashi, H., Imai, T., Tanaka, Y., Tobinaga, J., Wada, M., Morita, T., Yamada, F., Tsukamura, K., Oiwa, M., Kikumori, T., Narita, T. and Hiroshi, T. Suppressive effect of iodine on DMBA-induced breast tumor growth in the rat. *J. Surg. Oncol.*, **61**, 209–213 (1996).
- Funahashi, H., Imai, T., Tanaka, Y., Tsukamura, K., Hayakawa, Y., Kikumori, T., Mase, T., Itoh, T., Nishikawa, M., Hayashi, H., Shibata, A., Hibi, Y., Takahashi, M. and Narita, T. Wakame seaweed suppresses the proliferation of 7,12-dimethylbenz(a)anthracene-induced mammary tumors in rats. *Jpn. J. Cancer Res.*, **90**, 922–927 (1999).
- Eskin, B. A., Grotkowski, C. E., Connolly, C. P. and Ghent, W. R. Different tissue responses for iodine and iodide in rat thyroid and mammary glands. *Biol. Trace Elem. Res.*, **49**, 9–19 (1995).
- Smyth, P. P. A., Shering, S. G., Kilbane, M. T., Murray, M. J., Mcdermott, E. W. M., Smith, D. F. and O'Higgins, N. J. Serum thyroid peroxidase autoantibodies, thyroid volume, and outcome in breast carcinoma. *J. Clin. Endocrinol. Metab.*, **83**, 2711–2716 (1998).
- Venturi, S., Donati, F. M., Venturi, M., Venturi, A., Grossi, L. and Guidi, A. Role of iodine in evolution and carcinogenesis of thyroid, breast and stomach. *Adv. Clin. Path.*, **4**, 11–17 (2000).
- Keane, M. M., Ettenberg, S. A., Lowrey, G. A., Russell, E. K. and Lipkowitz, S. Fas expression and function in normal and malignant breast cell lines. *Cancer Res.*, **56**, 4791–4798 (1996).
- Yu, W., Israel, K., Liano, Q. Y., Aldaz, C. M., Sanders, B. G. and Kline, K. Vitamin E succinate (VES) induces Fas sensitivity in human breast cancer cells: role for M_r 43,000 Fas in VES-triggered apoptosis. *Cancer Res.*, **59**, 953–961 (1999).

(Received January 24, 2001/Revised March 5, 2001/2nd Revised March 27, 2001/Accepted April 2, 2001)

- 14) Hayakawa, A., Yokoyama, I., Tajiri, H., Okamoto, T. and Nakashima, I. Protein kinase C-dependent anti-apoptotic mechanism that is associated with high sensitivity to anti-Fas antibody in ovarian cancer cell lines. *Cancer Lett.*, **140**, 113–119 (1999).
- 15) Tanuma, S., Shiokawa, D., Tanimoto, Y., Ikekita, M., Sakagami, H., Takeda, M., Fukuda, S. and Kochi, M. Benzylideneascorbate induces apoptosis in L929 tumor cells. *Biochem. Biophys. Res. Commun.*, **194**, 29–35 (1993).
- 16) Raymond, E., Buquet-Fagot, C., Djelloul, S., Mester, J., Cvitkovic, E., Allain, P., Louvet, C. and Gespach, C. Antitumor activity of oxaliplatin in combination with 5-fluorouracil and the thymidylate synthase inhibitor AG337 in human colon, breast and ovarian cancers. *Anticancer Drugs*, **8**, 876–885 (1997).
- 17) Imai, K., Suga, K. and Nakachi, K. Cancer-preventive effects of drinking green tea among a Japanese population. *Prev. Med.*, **26**, 769–775 (1997).
- 18) Atiba, J. O. and Meyskens, F. L., Jr. Chemoprevention of breast cancer. *Semin. Oncol.*, **19**, 220–229 (1992).